

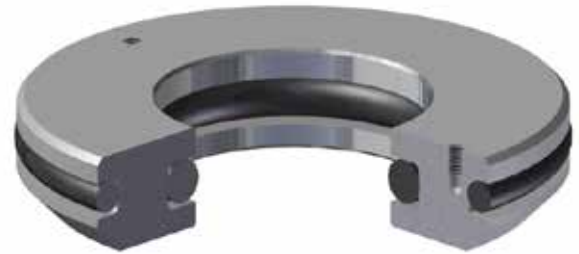
RH

PRIMARY PACK OFF SEAL

The Great North Wellhead and Frac (GNWF) "RH" primary pack-off is designed for use with 9" O.D. casing hangers to isolate the slip type casing hanger from additional pressure loads when the pack-off and spool or head connection seals are field tested.

The primary pack-off assembly is composed of a body, Inside Diameter (ID) O-ring, and Outside Diameter (OD) O-ring to support the standard offerings of 9" RH casing heads/spools and their related casing ranges.

The primary pack-offs are installed and seal in the upper load shoulder profile of GNWF "RH" style housings.



CASING HEAD HOUSING SIZE Hanger/Primary O.D. (Inches)	CASING SIZE HANGER/PRIMARY I.D. (inches)
9"	4 ½"
	5 ½"