

RCS

SECONDARY PACKOFF SEALS

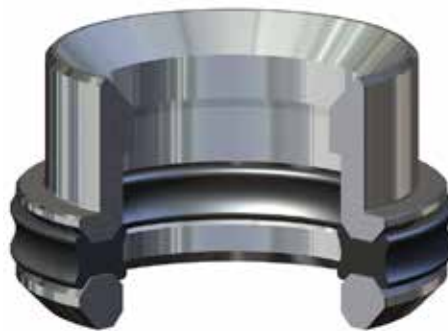
The Great North Wellhead and Frac (GNWF) "RCS" Secondary Packoff is a removable, 3-piece bushing style assembly furnished with:

- an integral bit-guide
- an elastomeric seal
- a retainer ring
- a split snap ring to properly hold the seal in-place within the housing.

The "RCS" Secondary Packoff is available in most casing sizes, supporting equipment offering sizes of 9", 11", and 13 5/8", with pressure ranges from 2000 PSI to 10 000 PSI



11" RCS SECONDARY PACKOFF



9" RCS SECONDARY PACKOFF