

# RC-22 / 29

## CASING SLIP HANGERS

RC-22 Automatic Casing Slips are designed to suspend medium weight casing strings and provide an “automatic” primary seal. It has become the Industry standard for this type of application and is compatible with most C-22/29 profiles. For heavier weight casing strings the RC-29 design would be recommended.

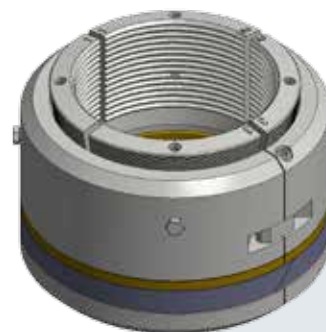
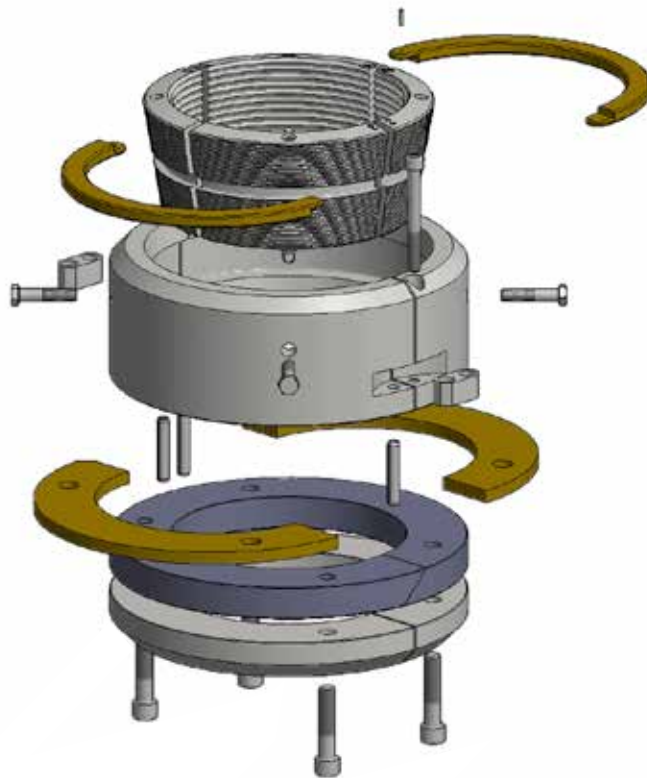
### Features

- The hinged assembly is easily wrapped around the casing and secured with the supplied socket head cap screw.
- The slip segments are held in place with supplied hex-head bolts and removed once the slip housing is installed.
- The RC-22/RC-29 pack-off seal element is energized with the casing string weight when landed into the casing head load shoulder.
- Conforms to API 6A temperature, material and PSL Specifications.
- The RC-22/RC-29 is designed to accommodate the maximum API tolerance range for casing O.D.

### Casing/String Limiting Factors

The combination of string weight and pressure above the pack-off seal element can affect the load capacity of casing slips. Please contact Great North Wellhead & Frac for your well specific concerns.

**NOTE:** RC-29 Automatic Casing Slips are recommended for heavy casing loads. The RC-29 Automatic Casing Slip has a longer overall height and must be installed in an RC-29 or equivalent profile only.



# RC-22/29 CASING SLIP HANGERS

CASING HEAD HOUSING SIZE Hanger/Primary O.D. (Inches)	CASING SIZE HANGER/PRIMARY I.D. (inches)
11"	4 1/2"
	5"
	5 1/2"
	7"
	7 5/8"
13 5/8"	7"
	7 5/8"
	8 5/8"
	9 5/8"
16 3/4"	9 5/8"
	10 3/4"
	11 3/4"
	11 7/8"
20"	13 3/8"
	16"