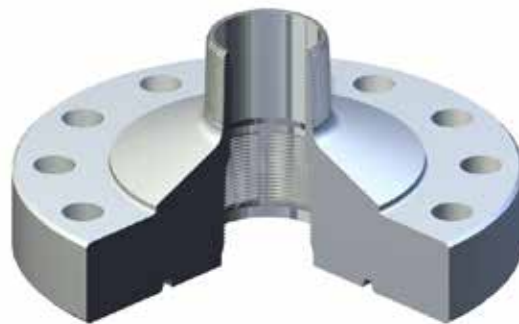


MALE PIN TUBING HEAD ADAPTER FLANGES

The Great North Wellhead & Frac (GNWF) tubing head adapter flange is designed to adapt the uppermost connection of a tubing head to the lowermost valve, or pumping equipment of the Christmas tree once the well has been completed.

The most common sized flanges range from 7 1/16" 2000 PSI to 13 5/8" 10 000 PSI, and offer several connection options to suit field requirements. Contact Great North Equipment & Frac to inquire about additional sizes and configurations.



MALE PIN TUBING HEAD ADAPTER

The Male Pin Tubing Head Adapter Flange (M.P.U.)

The Male Pin Tubing Head Adapter Flange is a drilled-through flange with an External Upset End (E.U.E.) male pin and a female suspension thread on the bottom of the flange. The minimum through-bore allows passage of H.B.P.V. plugs through to the tubing hanger below.

This adapter is used mainly for the installation of threaded gate valves or pumping equipment.

Box by Box Tubing Head Adapter Flanges

Similar to the "Male Pin", the Box By Box Tubing Head Adapter Flange is a drilled-through flange with an External Upset End (E.U.E.) female suspension thread on the bottom of the flange and a matching External Upset End (E.U.E.) female thread on the top of the flange. The box connection on top allows the operator to adjust the height of the connection using a variety of different lengths of tubing nipples. This adapter is used mainly for the installation of threaded gate valves or pumping equipment.